

# COMMERCIAL DIAGNOSTIC SYSTEM



**TechPRO Commercial Diagnostic System – the most advanced tool for heavy duty diagnosis and repair.**

**Models in this section:**

- VDS1000HD Commercial Vehicle Diagnostic System
- VDS Combo Diagnostic System
- VCI1000HD Adapter & Cable Kit
- VDS1000HD Subscription Renewal

# TechPRO<sup>®</sup> Diagnostic Systems (VDS Combo Kit)

**The TechPRO Automotive Diagnostic System (VDS1000) is the most advanced technology available for professional technicians.** This versatile, software-based tool helps analyze, diagnose and repair today's sophisticated vehicles faster and more accurately than ever before. After decades of providing diagnostics to OEM's end-of-line manufacturing test systems, MAHLE is now bringing this speed and stability to an aftermarket scan tool for the first time.

**The TechPRO Commercial Diagnostic System (VDS1000HD) from MAHLE Service Solutions, powered by JPRO<sup>®</sup>, provides the heavy duty market with the ability to analyze, diagnose and repair today's vehicles faster.** The development and design of the new diagnostic tool was completed in a partnership with Noregon, the leading vehicle diagnostics solutions supplier to the commercial vehicle industry. It provides more than 54,000 heavy- and medium-duty fault codes with detailed OEM level component and trailer descriptions. The easy-to-use design allows users to view and print log files, obtain fault management information, store and save data and review total vehicle health status.

## VDS1000

### **SPEED.**

Decode a VIN in seconds with one click. Communicates with all modules and reports all DTC's in 20-30 seconds on average.

### **DATA.**

Real-time streaming data, with software updates downloaded rapidly from the Internet.

### **FUNCTIONALITY.**

Use with existing tablet, laptop, or desktop with no need to purchase additional hardware. TechPRO<sup>®</sup> Automotive Diagnostic System can be purchased with the option of a tablet bundle.

### **RESOURCE.**

History is collected on every component of the analysis with instant pass-thru to repair data for subscribers of Identifix, Mitchell 1, iATN and more...

### **TECH-FRIENDLY.**

Bright LED light confirms that VCI is communicating and audible alarm reminds technicians to disconnect.

## **COMBO KIT INCLUDES BOTH COMPONENTS FOR DIAGNOSIS AND REPAIR ON BOTH LIGHT AND COMMERCIAL VEHICLES**



## VDS1000HD

### **SPEED.**

Read the entire vehicle from one screen, in under a minute.

### **DATA.**

Record data log files for playback at a later time, without having to reconnect to a vehicle.

### **CONNECTION.**

Provides 54,000+ detailed OEM level fault code descriptions. The VCI1000HD adapter is fully RP1210C and J1939 type 2 compliant.

### **TESTING.**

Offers expansive bi-directional capabilities such as manual regens, cylinder cutout tests and idle shutdown enable/disable.

### **COVERAGE.**

Provides 98.5% coverage of all heavy duty truck DTCs through 2017.

POWERED BY

 **JPRO<sup>®</sup> TECHNOLOGY**

# TechPRO<sup>®</sup>

© MAHLE 2018

VDS1000HD COVERAGE BY MANUFACTURER

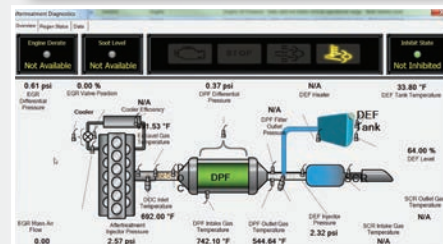
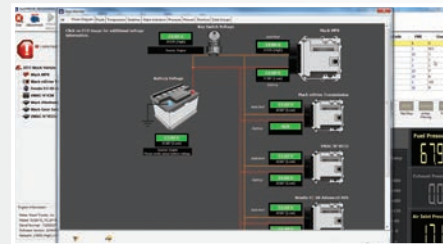
	OEM Diagnostic Trouble Codes/Lookup Information	Proprietary OEM Data and Faults	Clear Fault Codes	Commanded Tests & Parameter Changes	Trip Data Management*	Print Reports by Vehicle
<b>VEHICLE – BODY &amp; CHASSIS</b>						
Mack	*	*	*		*	*
Volvo	*	*	*		*	*
Freightliner	*	*	*			*
Western Star	*	*	*			*
Sterling	*	*	*			*
International	*	*	*			*
Kenworth	*	*	*			*
Peterbilt	*	*	*			*
<b>ENGINES</b>						
Mack	*	*	*	*	*	*
Volvo	*	*	*	*	*	*
Cummins	*	*	*	*	*	*
Caterpillar	*	*	*			*
International	*	*	*	*		*
PACCAR	*	*	*	*		*
Detroit Diesel	*	*	*	*		*
Mercedes-Benz	*	*	*			*
<b>TRANSMISSIONS</b>						
Mack	*	*	*		*	*
Volvo	*	*	*		*	*
Allison	*	*	*			*
Eaton	*	*	*			*
Detroit Diesel	*	*	*			*
<b>BRAKES</b>						
Bendix	*	*	*			*
WABCO	*	*	*			*
Haldex	*	*	*			*
Wabash	*	*				*

\*Includes /Vehicle Health, Trip Reports & LOV Reports



**LIGHT VEHICLES (VDS1000)**

**COMMERCIAL VEHICLES (VDS1000HD)**





## Part Numbers

<b>402 80011 00</b>	VDS1000HD Commercial Diagnostic System
<b>402 80012 00</b>	VDS Combo Diagnostic System (VDS1000 and VDS1000HD)
<b>402 80013 00</b>	VCI1000HD Adapter & Cable Kit
<b>402 80014 00</b>	VDS1000HD Renewal

## Kit Contents Per Kit Type

	VDS Combo	VDS1000HD	Adapter Kit
VCI1000 Automotive Vehicle Communication Interface	*		
VDS1000 Software Activation Card – 1 Year	*		
VCI1000HD Commercial Vehicle Communication Interface	*	*	
VDS1000HD Software Activation Card – 1 Year	*	*	
Quick Start Guide	*	*	*
6' MicroUSB Cable	*	*	*
Serial to 9 Pin Cable	*	*	*
Serial to 6 Pin Cable	*	*	*
15' B to A USB Cable	*	*	*
Serial to Volvo/MACK OBD 16 Pin (Purple)	*	*	*
Serial to GM Medium Duty OBD Cable (Yellow)	*	*	*
Serial to Ford Medium Duty OBD Cable (Red)	*	*	*
Serial to Medium Duty OBD-II Cable (Gray)	*	*	*
17" Carry Case with Foam Insert	*	*	*
USB Drive	*	*	*

## 💡 Service and Support

Backed by the MAHLE name for superior quality, each VCI and diagnostic system is crafted for maximum uptime and less maintenance. The TechPRO® series goes beyond standards; quality means failure-free assembly and satisfied end customers. Whether our customers want on-site technical assistance in making their business more efficient or just have a question regarding our products – we're here for them.

**To find your local distributor, contact customer service at (800) 468-2321.**  
[www.servicesolutions.mahle.com](http://www.servicesolutions.mahle.com)