

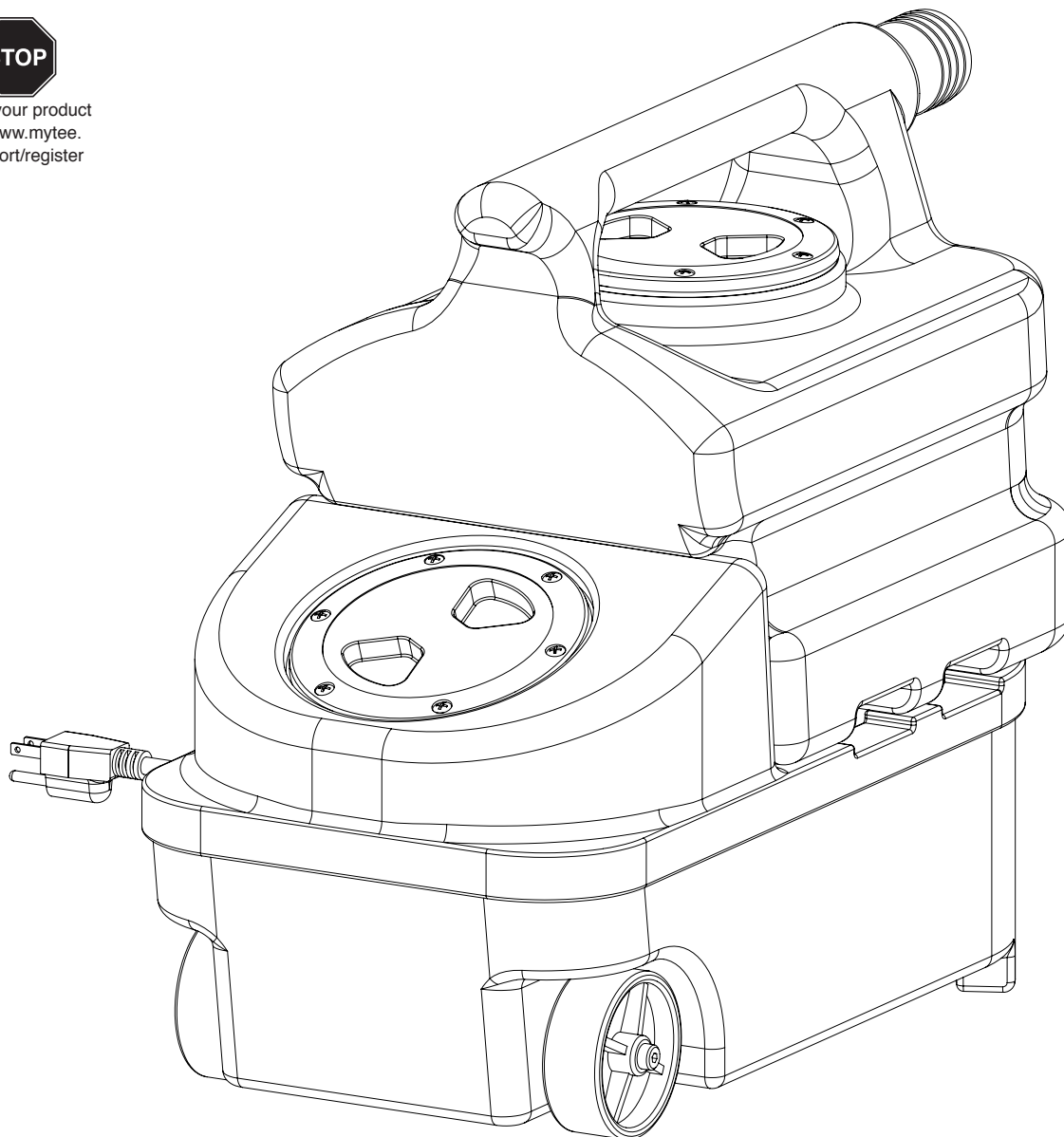
Instructions for S-300 Tempo[™]



Please read before use.



Register your product
at <http://www.mytee.com/support/register>



[General Information p. 2](#)

[Set Up p. 4](#)

[Parts List p. 7](#)

[Notes p. 9](#)

Model # _____

Serial # _____

Form # ADM-Tempo

7-16

GENERAL INFORMATION

Dear Customer:

Congratulations on the purchase of your new Tempo™ spotter. As you are already aware, the scene of the equipment world is becoming more high tech, and we at Mytee Products Inc. strive to keep you on the cutting edge with superior quality and technology.

Keep in mind that the S-300 Tempo™ is a machine, so neglect or abuse will cause unnecessary damage and void the warranty. However with simple maintenance the S-300 will give quality performance for many years to come.

If warranty questions arise, please consult your user manual or get in touch with your distributor. If you have questions about maintenance, replacing parts or ordering parts, please call an authorized Mytee Products Inc. Service Center. To see an updated list, visit our website at www.mytee.com

Before you begin cleaning, please read your manual thoroughly.

Sincerely,
Mytee Customer Care Dept.

Grounding Instructions

This machine must be grounded. If it should malfunction or breakdown, grounding provides a path of least resistance for electrical shock. This machine is equipped with a cord having an equipment-grounding conductor and grounding plug. The plug must be plugged into an appropriate outlet that is properly installed in accordance with all local code and ordinances. Do not remove ground pin; if missing, replace plug before use.



DANGER

Improper connection of the equipment-grounding conductor can result in a risk of electric shock. Check with a qualified electrician or service person if you are in doubt as to whether the outlet is properly grounded. Do not modify the plug provided with the machine. If it will not fit the outlet, have a proper outlet installed by a qualified electrician.

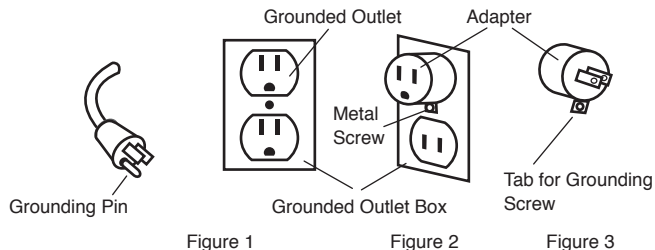
This appliance is for use on a nominal 120-volt circuit, and has a grounding plug that looks like the plug illustrated in Figure 1 below. A temporary adapter illustrated in Figures 2 and 3 may be used to connect this plug to a 2-pole receptacle as shown in Figure 2 if a properly grounded outlet is not available. The temporary adapter should be used only until a properly grounded outlet (Figure 1) can be installed by a qualified electrician. The green colored rigid ear, tab or the like extending from the adapter must be connected to a permanent ground such as a properly grounded outlet box cover. Whenever the adapter is used, it must be held in place by a metal screw. Grounding adapters are not approved for use in Canada.

Replace the plug if the grounding pin is damaged or broken.

The Green (or GreenYellow) wire in the cord is the grounding wire. When replacing a plug, this wire must be attached to the grounding pin only.

DO NOT use extension cords.

Please Note for America use only



Parts and Service

Repairs, when required, should be performed by Mytee service personnel or Mytee authorized Service Center using Mytee original replacement parts and accessories. Call Mytee for repair parts or service. Please specify the Model and Serial Number when discussing your machine.

Name Plate

The Model and Serial Number of your machine are shown on the Nameplate on the back panel of the machine. This information is needed when ordering repair parts for the machine. Use the space provided on the front cover to note the Model and Serial Number of your machine for future reference.

Unpacking the Machine

When the machine is delivered, carefully inspect the shipping carton and the machine for damage. If damage is evident, save the shipping carton so that it can be inspected by the carrier that delivered it. Contact the carrier immediately to file a freight damage claim.

Caution and Warnings

Symbols

Mytee uses the symbols below to signal potentially dangerous conditions. Always read this information carefully and take the necessary steps to protect personnel and property.



CAUTION

Is used to warn of immediate hazards that will cause severe personal injury or death.



WARNING

Is used to call attention to a situation that could cause severe personal injury.



CAUTION

Is used to call attention to a situation that could cause minor personal injury or damage to the machine or other property. When using an electrical appliance, basic precautions should always be followed, including the following: Read all instructions before using this machine. This product is intended for commercial use only.



WARNING

To reduce the risk of fire, electrical shock, or injury:

1. Read all instructions before using equipment.
2. Use only as described in this manual. Use only manufacturer's recommended attachments.
3. Always unplug power cord from electrical outlet before attempting any adjustments or repairs.
4. Do not unplug by pulling on cord. To unplug, grasp the plug, not the cord.
5. Do not pull or carry by cord. Do not close a door on cord or pull cord around sharp edges or corners.
6. Do not run appliance over cord. Keep cord away from heated surfaces.
7. Do not use with damaged cord or plug. If cord is damaged, repair immediately.
8. Do not use outdoors or on wet surfaces and or standing water.
9. Always unplug or disconnect the appliance from power supply when not in use.
10. Do not allow to be used as a toy. Close attention is necessary when used by or near children.
11. Do not use in areas where flammable or combustible material may be present.
12. Do not leave the unit exposed to harsh weather elements. Temperatures below freezing may damage components and void warranty.
13. Use only the appropriate handles to move and lift unit. Do not use any other parts of this machine for this purpose.
14. Keep hair, loose clothing, fingers, and all parts of the body away from all openings and moving parts.
15. Use extra care when cleaning on stairs.
16. To reduce the risk of fire or electric shock, do not use this machine with a solid-state speed control device.
17. The voltage and frequency indicated on the name plate must correspond to the wall receptacle supply voltage.
18. When cleaning and servicing the machine, local or national regulations may apply to the safe disposal of liquids which may contain: chemicals, grease, oil, acid, alkalines, or other dangerous liquids.
19. Do not leave operating unattended.

Filling the Solution Tank

1. Fill the solution tank with the approved cleaning solution.
2. Do not fill up the solution tank completely: 1" should be left free at the top.
3. Typically, the solution should be a mixture of water and a cleaning chemical appropriate for the type of job.
4. Always follow the dilution instructions on the chemical container label.
5. The temperature of the cleaning solution must not exceed 70°C/160°F.



CAUTION

Use only non-flammable liquid in this machine.

GENERAL INFORMATION

Setup

1. Fill solution tank with water or approved cleaning agent. For best results, fill with warm water (140°). Replace vacuum tank.



WARNING

Flammable materials can cause an explosion or fire. Do not use flammable solutions or materials in tank(s).

FOR SAFETY: When using machine, follow mixing and handling instructions on chemical containers.

ATTENTION: If using powdered cleaning chemicals, mix prior to adding.

2. Attach solution hose (located front of machine). NOTE: Make sure the quick disconnect snap together firmly. As you do this, always inspect hoses for cracks or fraying. Do not use if hoses are damaged.
3. Attach vacuum hose to recovery tank.
4. Plug machine's cord into a grounded wall outlet. FOR SAFETY: Do not operate machine unless cord is properly grounded. FOR SAFETY: Do not operate machine with the use of an extension cord.
5. Turn on power. Key tool until you have a steady flow.
6. Re-key upholstery tool until hot water begins flowing.
7. Begin cleaning. Make two dry passes to every wet pass.
8. Work away from cords to avoid damage.
9. Use a defoamer in your recovery tank.
10. To clean heavily soiled areas, repeat cleaning from different directions.
11. When vacuum tank is full, empty tank.
12. When work is complete, unplug cords and hoses.
13. Wrap and clean hoses. Clean all tanks.

Pre-Operation

1. Vacuum carpet and upholstery and remove other debris.
2. Perform machine setup procedures.
3. Inspect power cord for damage.

Operation

1. Turn power switch on.
2. Pull up on tool lever to release air in the line. Hold lever until a steady flow of water comes out of the upholstery tool.

Note: When cleaning upholstery, always check manufacturer's cleaning instructions.



CAUTION

1. Work away from outlet and power cord to prevent cord damage.
2. Use a recommended foam control solution in the recovery tank to prevent vacuum motor damage. Periodically check for excessive foam buildup in solution tank, and recovery tank.
3. To clean heavily soiled areas, repeat cleaning path from different direction.
4. When vacuum tank is full, it is time to empty the dirty water from the recovery tank, and refill solution tank.
5. After cleaning, relieve water pressure from tool before disconnecting hose. Squeeze trigger for five seconds after turning main power switch off.

After Use

1. Unplug.
2. Empty solution tank and rinse it with clean water.
3. Inspect hoses and replace if damaged.
4. Empty the recovery tank.
5. Inspect solution filter. Clean or replace if damaged.
6. Store the machine in a clean, dry place.
7. Open recovery tank cover to promote air circulation.
8. Do not expose to rain. Store indoors.

Maintenance Schedule

Maintenance item	Daily	Once a week
Clean and inspect Tanks	x	
Clean and inspect Hoses	x	
Check power supply cable	x	
Clean machine with all purpose cleaner and cloth	x	
Check spray nozzles		x
Flush solution system with Mytee system maintainer		x
Remove and clean float shut-off screen from tank		x
Inspect vacuum hoses for holes and loose cuffs		x
Inspect machine for water leaks and loose hardware		x

Troubleshooting

There is no power.

1. Plug machine in proper outlet.
2. Check circuit breaker; reset circuit breaker, other items should not run on the same circuit as machine. Outlet must be a 20-amp circuit.

Pump does not work properly.

1. Snap quick disconnects firmly together.
2. Check solution tank; may be empty.
3. Jets clogged, remove jet and flush clean.
4. Filters clogged, remove filters and rinse clean with water.
5. If brass check valve is stuck replace valve.
6. Check pump wire. May need to reconnect wire.
7. Switch plate switch may need to be replaced.
8. If pump motor brushes are worn, replace pump.

Vacuum motor does not work properly.

1. Check that hose is tightly connected.
2. Close drain hose valve completely.
3. Check and clean foam filter located in recovery tank.
4. If water is coming out of vacuum motor, use a low foaming detergent.
5. Clean upholstery tool.

Machine Specifications

Solution Tank	1 gallon
Recovery Tank	1 gallon
Vacuum	Single 2-stage
CFM	97
Water Lift	85"
Pump PSI	55
Pump GPM	0.37
Power Consumption	7 amps @ 115V 60Hz
Machine Weight	20 lbs.
Machine Dimensions	20" x 10" x 16.5"
Power Cord	25' 16/3

230V Configuration Information

Model Number	S300-230
Power Consumption	3 amps @ 230V 60Hz/50Hz

FAQs

Q: What comes standard with the S-300?

A: The S-300 comes with an 8' Hose-n-Hose™ vacuum & internal solution hose and a 4" Stainless Steel Upholstery Tool attached.

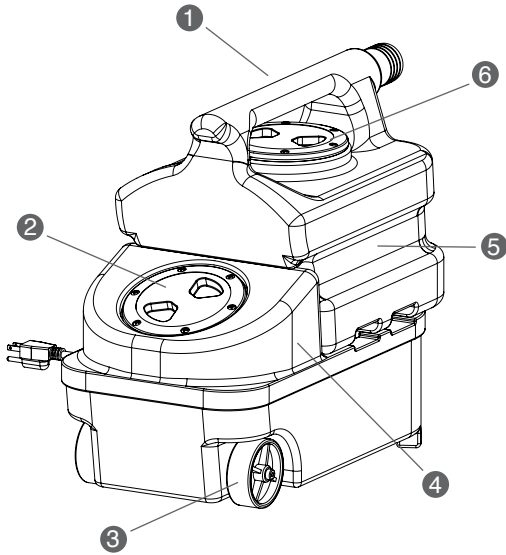
Q: Where do I plug the machine in?

A: The S-300 requires a 20A grounded circuit. Please note: GFI outlets may trip before the breaker setting.

Q: Is there anything I can do to increase the expected life of my machine?

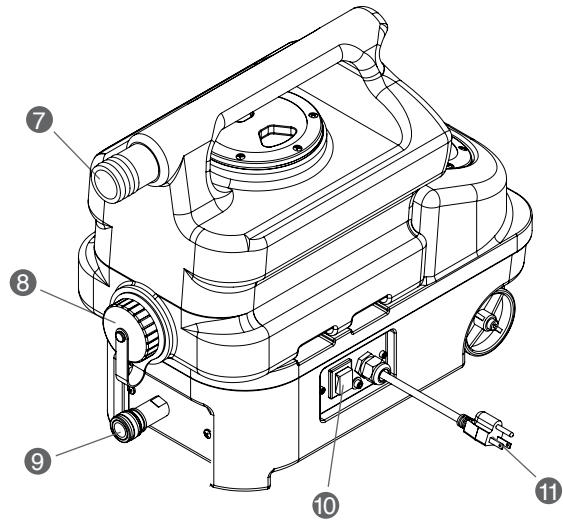
A: Running the vacuum motors with the tank empty and lid off will allow excess moisture in the vacs to dry off. You should also run a System Maintainer through the system to keep the hoses, pump, and heater clean and free of debris.

FRONT



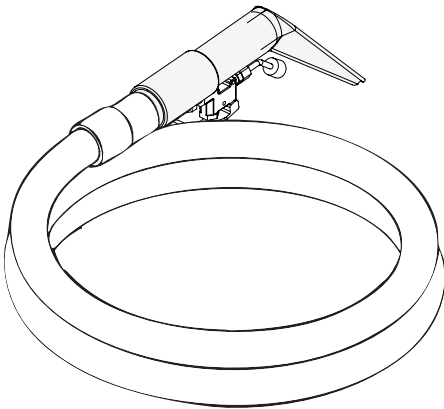
- 1. Handle
- 2. Solution Tank Lid
- 3. 3" Wheels
- 4. Solution Tank
- 5. Recovery Tank
- 6. Recovery Tank Lid

BACK



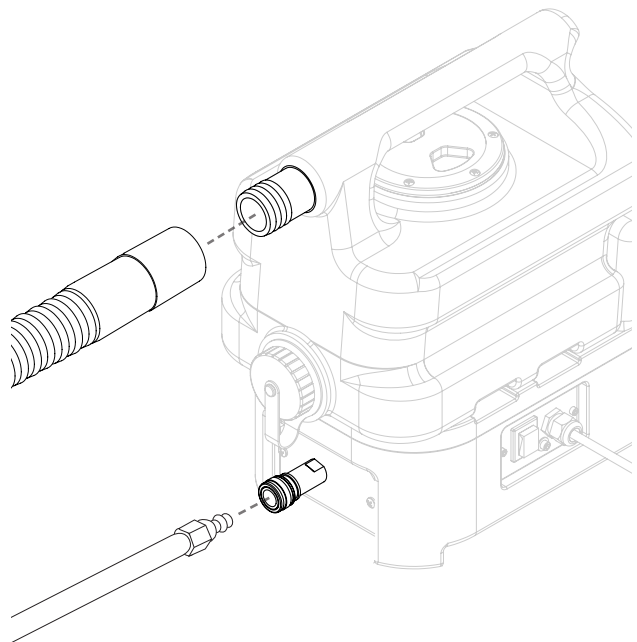
- 7. Vacuum Hose Hook Up
- 8. Recovery Tank Drain Cap
- 9. Quick Disconnect
- 10. Power Switch
- 11. 25' Power Cord

ACCESSORY



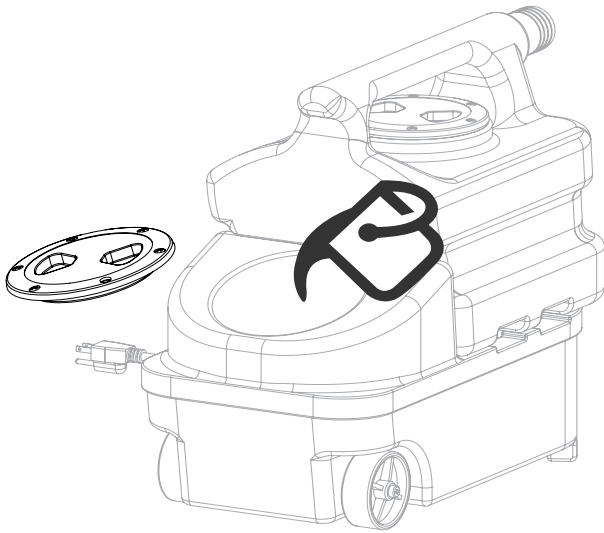
8' vacuum and solution hose combo.

VACUUM AND SOLUTION HOSE CONNECTION



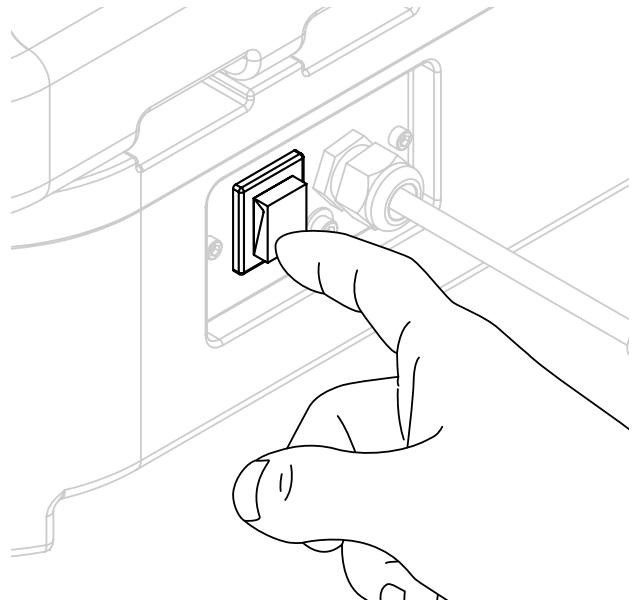
Located at the back of the Tempo™, attach the male end of the solution hose to the Tempo's™ QD. Then connect the vacuum hose to the Tempo's™ hose port.

FILL SOLUTION TANK



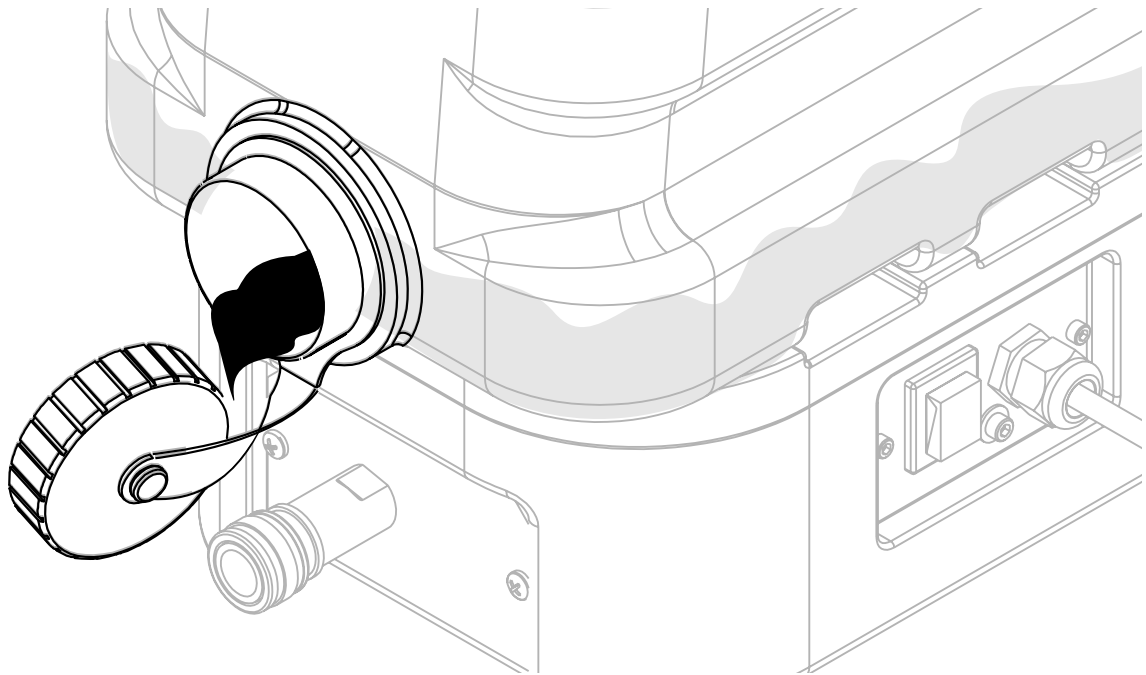
Twist off solution tank lid and fill with water. For best results, fill with warm water (140°F).

POWER SWITCH



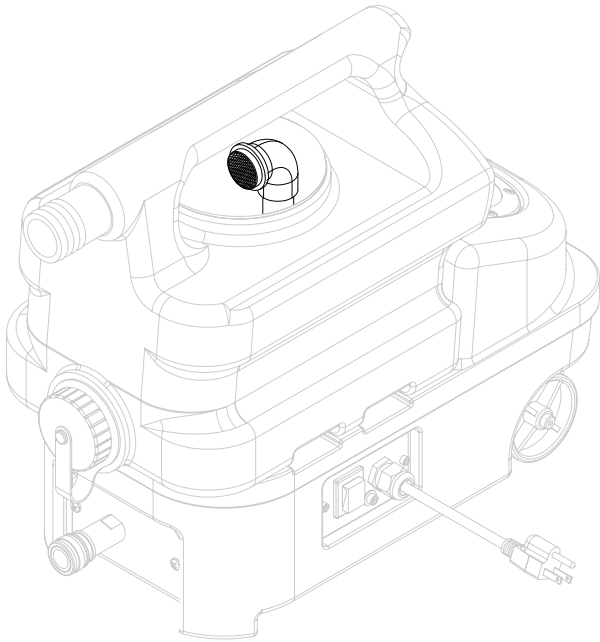
Plug machine's cord into a grounded wall outlet then switch power on. **FOR SAFETY:** Do not operate machine unless cord is properly grounded.

EMPTY RECOVERY TANK



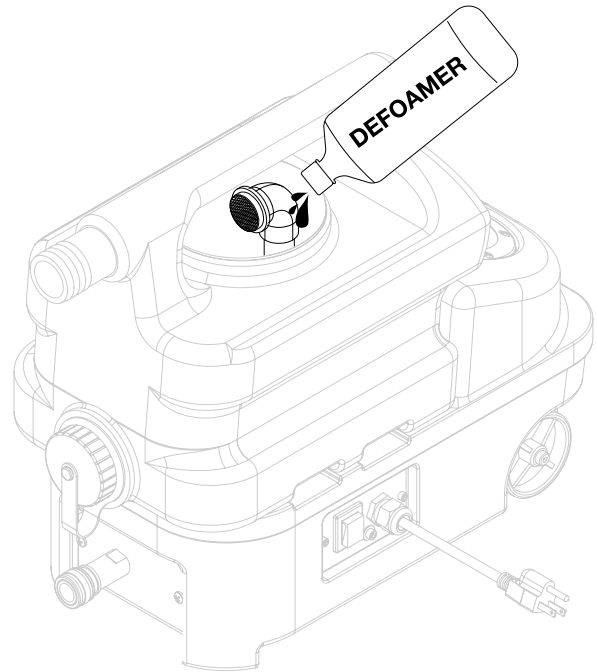
To empty the recovery tank, remove cap located above the quick disconnect to releases fluid.

FILTER



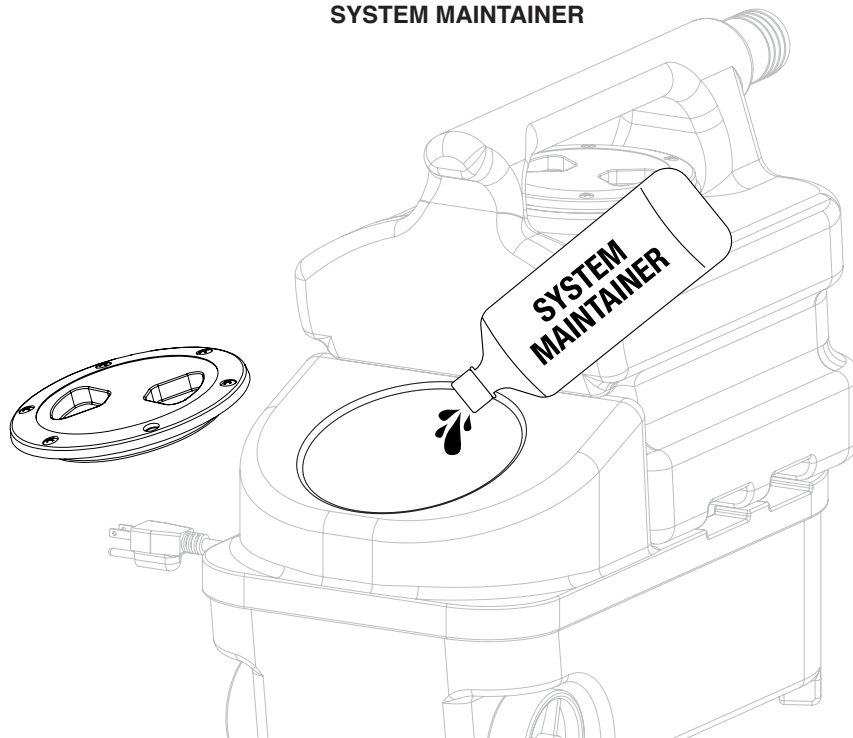
To get the best performance out of the Tempo™, after each job, twist off the recovery tank lid and clean off the filter located on the vacuum stack.

DEFOAMER



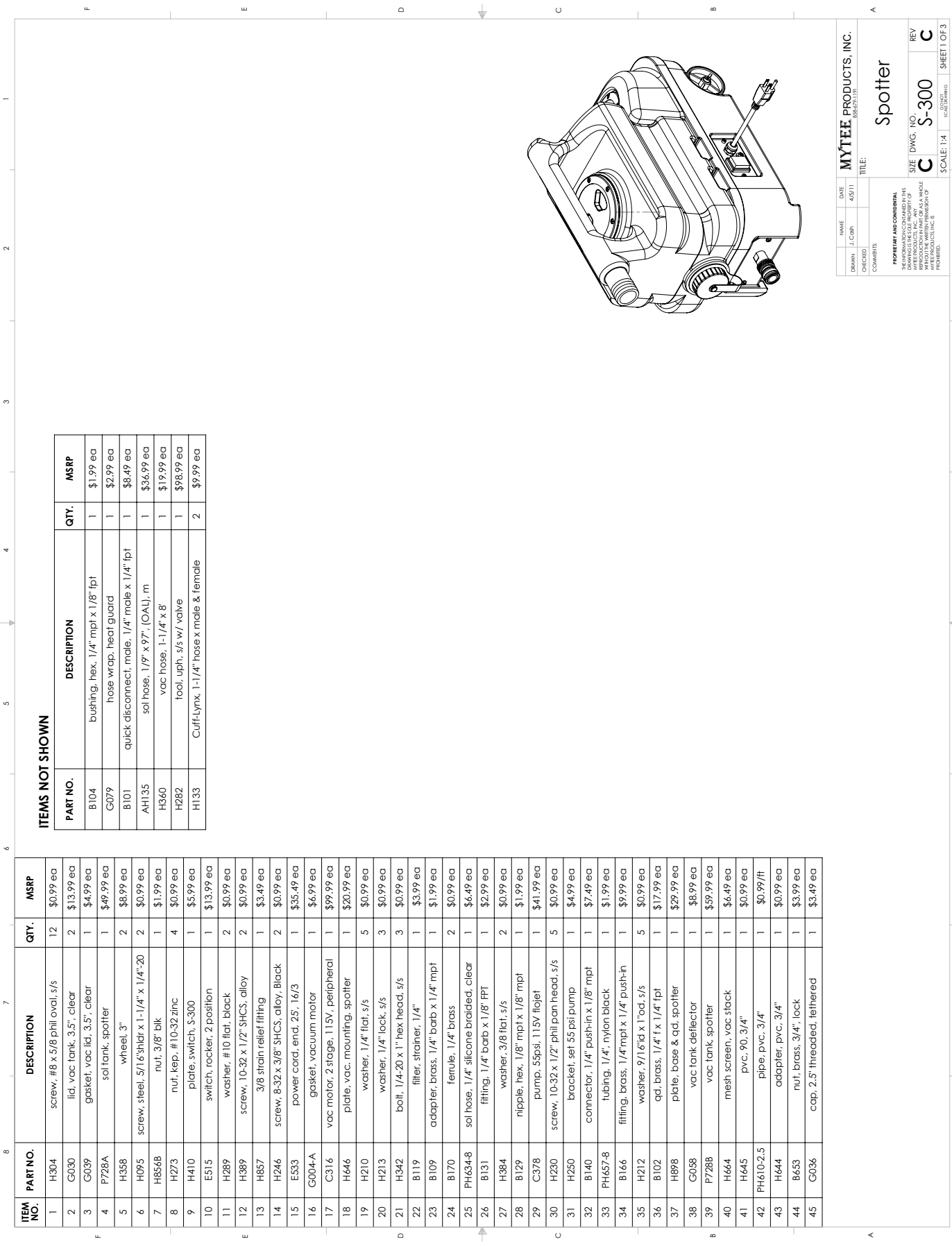
Add defoamer in the recovery tank to reduce foam and prolonging the life of the Tempo's™ vacuum motor .

SYSTEM MAINTAINER



Weekly flushing of the solution system with Mytee System Maintainer helps keep lines clean and prevents chemical build-up, improving pump life, performance and pressure.

S-300 TEMPO™ PARTS & PRICING



ITEMS NOT SHOWN

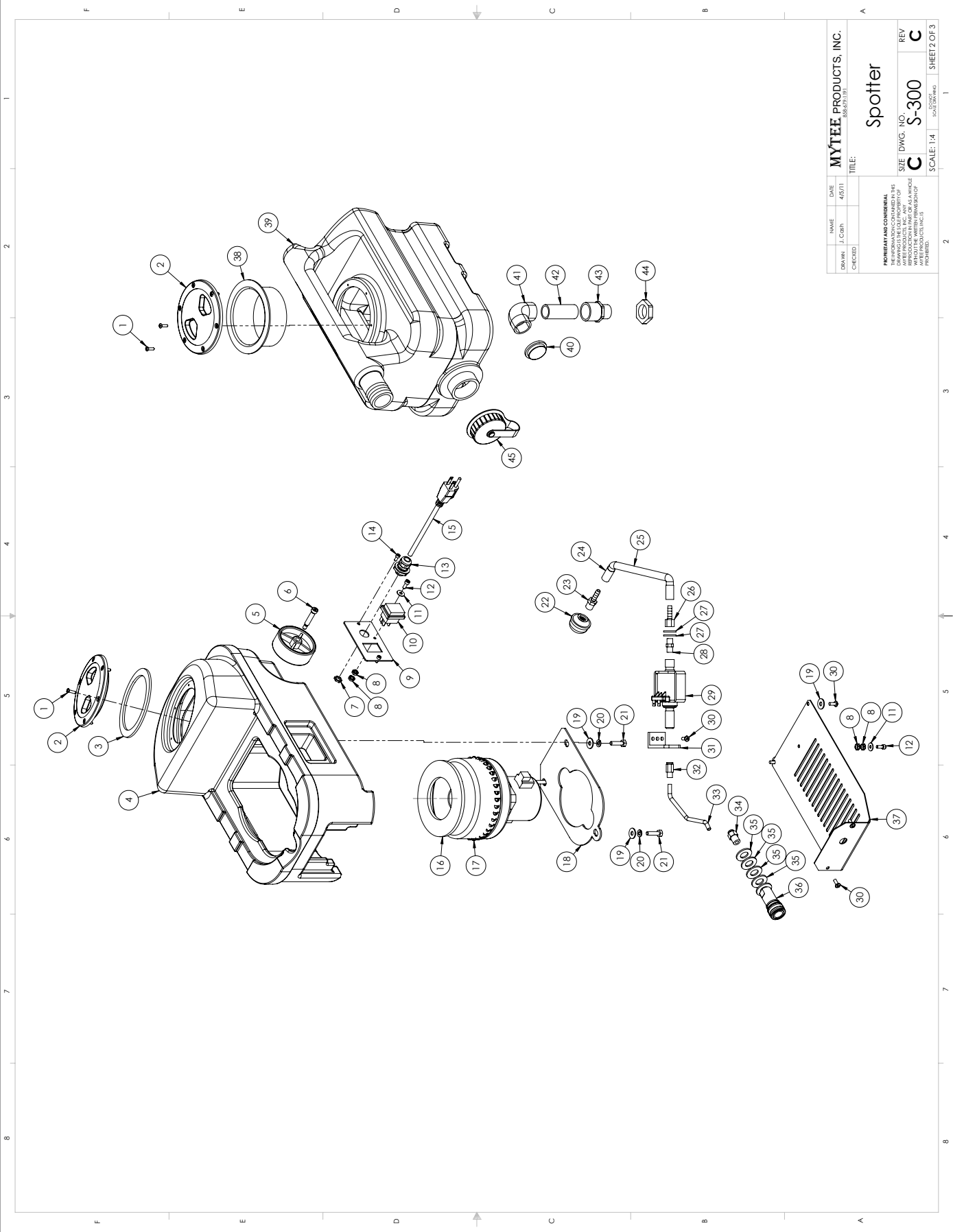
PART NO.	DESCRIPTION	QTY.	MSRP
B104	bushing, hex, 1/4" mpt x 1/8" fpt	1	\$1.99 ea
G079	hose wrap, heat guard	1	\$2.99 ea
B101	quick disconnect, male, 1/4" male x 1/4" fpt	1	\$8.49 ea
AH135	sol hose, 1/8" x 97", (OAL), m	1	\$36.99 ea
H360	vac hose, 1-1/4" x 8'	1	\$19.99 ea
H282	tool, uph, s/s w/ valve	1	\$98.99 ea
HI333	Cuff-Lynx, 1-1/4" hose x male & female	2	\$9.99 ea

ITEM NO.	PART NO.	DESCRIPTION	QTY.	MSRP
1	H304	screw, #8 x 5/8 phil oval, s/s	12	\$0.99 ea
2	G030	lid, vac tank, 3.5", clear	2	\$13.99 ea
3	G039	gasket, vac lid, 3.5", clear	1	\$4.99 ea
4	P728A	sol tank, spotter	1	\$49.99 ea
5	H358	wheel, 3"	2	\$8.99 ea
6	H095	screw, steel, 5/16" x 1-1/4" x 1/4"-20	2	\$0.99 ea
7	H856B	nut, 3/8" blk	2	\$1.99 ea
8	H273	nut, kep, #10-32 zinc	4	\$0.99 ea
9	H410	plate, switch, S-300	1	\$5.99 ea
10	E515	switch, rocker, 2 position	1	\$13.99 ea
11	H289	washer, #10 flat, black	2	\$0.99 ea
12	H389	screw, 10-32 x 1/2" SHCS, alloy	2	\$0.99 ea
13	H857	3/8 strain relief fitting	1	\$3.49 ea
14	H246	screw, 8-32 x 3/8" SHCS, alloy, Black	2	\$0.99 ea
15	E533	power cord, end, 25', 16/3	1	\$35.49 ea
16	G004-A	gasket, vacuum motor	1	\$6.99 ea
17	C316	vac motor, 2 stage, 115V, peripheral	1	\$99.99 ea
18	H646	plate, vac, mounting, spotter	1	\$20.99 ea
19	H210	washer, 1/4" flat, s/s	5	\$0.99 ea
20	H213	washer, 1/4" lock, s/s	3	\$0.99 ea
21	H342	bolt, 1/4-20 x 1" hex head, s/s	3	\$0.99 ea
22	B119	filter, strainer, 1/4"	1	\$3.99 ea
23	B109	adapter, brass, 1/4" barb x 1/4" mpt	1	\$1.99 ea
24	B170	ferrule, 1/4" brass	2	\$0.99 ea
25	PH634-B	sol hose, 1/4" silicone braided, clear	1	\$6.49 ea
26	B131	fitting, 1/4" barb x 1/8" fpt	1	\$2.99 ea
27	H384	washer, 3/8 flat, s/s	2	\$0.99 ea
28	B129	riipple, hex, 1/8" mpt x 1/8" mpt	1	\$1.99 ea
29	C378	pump, 55psi, 115V flojet	1	\$41.99 ea
30	H230	screw, 10-32 x 1/2" phil pan head, s/s	5	\$0.99 ea
31	H250	bracket, set 55 psi pump	1	\$4.99 ea
32	B140	connector, 1/4" push-in x 1/8" mpt	1	\$7.49 ea
33	PH657-B	tubing, 1/4", nylon black	1	\$1.99 ea
34	B166	fitting, brass, 1/4" mpt x 1/4" push-in	1	\$9.99 ea
35	H212	washer, 7/16" x 1" od, s/s	5	\$0.99 ea
36	B102	qd, brass, 1/4" x 1/4" fpt	1	\$17.99 ea
37	H898	plate, base & qd, spotter	1	\$29.99 ea
38	G058	vac tank deflector	1	\$8.99 ea
39	P728B	vac tank, spotter	1	\$59.99 ea
40	H664	mesh screen, vac stack	1	\$6.49 ea
41	H645	pvc, 90, 3/4"	1	\$0.99 ea
42	PH610-2.5	pipe, pvc, 3/4"	1	\$0.99/ft
43	H644	adapter, pvc, 3/4"	1	\$0.99 ea
44	B653	nut, brass, 3/4", lock	1	\$3.99 ea
45	G036	cap, 2.5" threaded, tethered	1	\$3.49 ea

NAME	DATE
MYTEE PRODUCTS, INC.	4/8/11
DRAWN	J. Carr
CHECKED	
COMMENTS	
<p>FOR PART AND COMPONENTS: THE INFORMATION CONTAINED HEREIN IS THE PROPERTY OF MYTEE PRODUCTS, INC. AND IS TO BE USED ONLY FOR THE REPRODUCTION OF THIS DRAWING. ANY REPRODUCTION IN WHOLE OR IN PART OF THIS DRAWING WITHOUT THE WRITTEN PERMISSION OF MYTEE PRODUCTS, INC. IS PROHIBITED.</p>	
TITLE	spotter
SIZE	DWG. NO. S-300
REV	C
SCALE	1:1
SHEET 1 OF 3	

Part prices are subject to change.

S-300 TEMPO™ PARTS & PRICING



NAME	DATE	MYTEE PRODUCTS, INC.
DRWVN: J. Corp	4/05/11	888-673-191
CHECKED:		TITLE:
		Spotter
		SIZE DWG. NO. REV
		C S-300 C
		SCALE: 1:4 SHEET 2 OF 3

IMPORTANT AND CONFIDENTIAL:
 THIS DRAWING IS THE SOLE PROPERTY OF MYTEE PRODUCTS, INC. ANY REPRODUCTION IN WHOLE OR IN PART WITHOUT THE WRITTEN PERMISSION OF MYTEE PRODUCTS, INC. IS PROHIBITED.

NOTES



Mytee Products Inc.
13655 Stowe Dr.
Poway, CA 92064
www.mytee.com

© 2016 Mytee Products Inc.
Printed in the U.S.A.