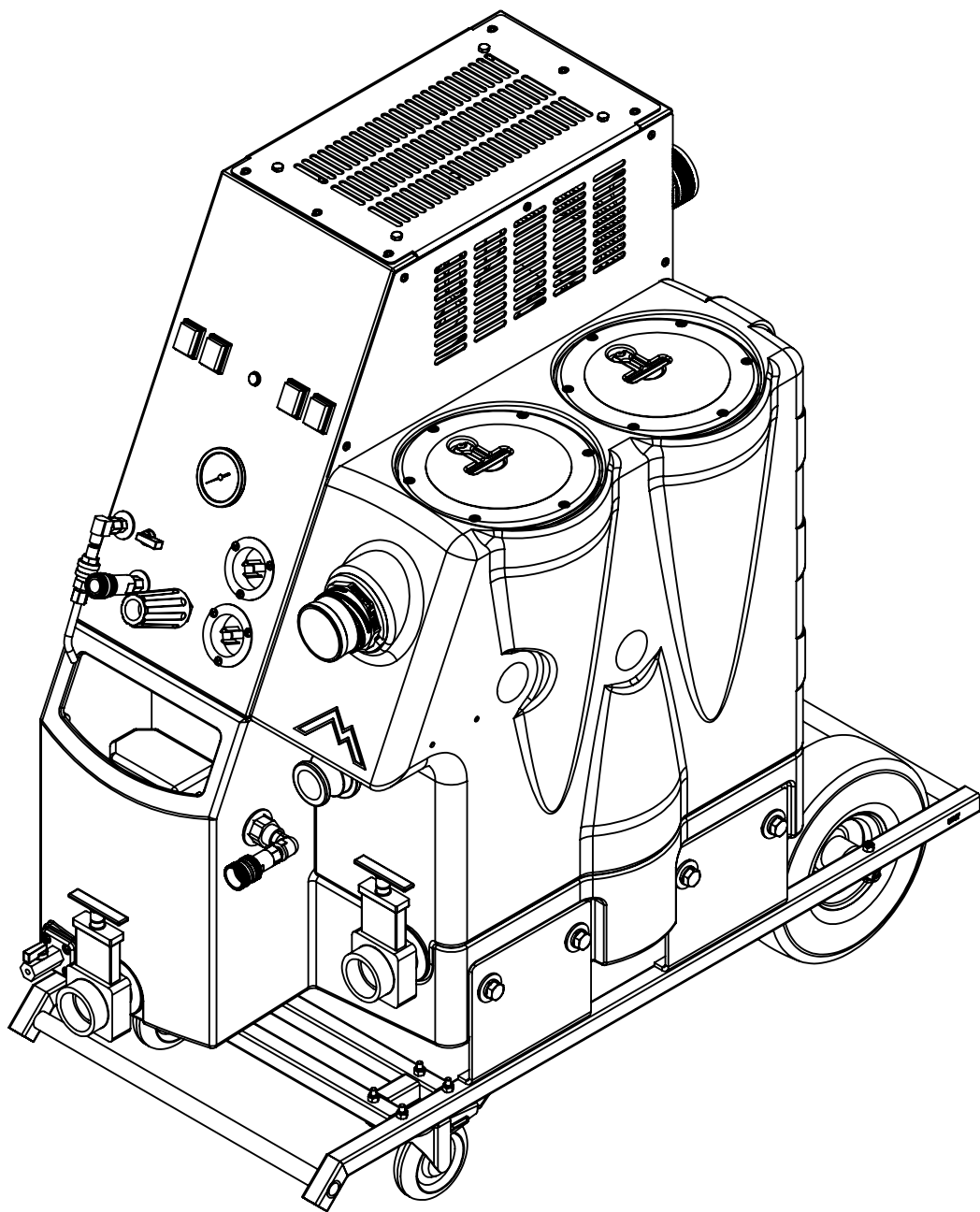




ITEM NO.	PART NO.	DESCRIPTION	QTY.
1	P505	ETM Sol Tank / Chassis	1
2	H541A	valve, float, autofill	1
3	H097	washer, 1"ID x 1.5"OD, flat, s/s	2
4	B182	adapter, 3/4" fgh x 1/2" fpt	1
5	B273	elbow, 90 deg street, 3/8"fpt x 1/2" mpt	1
6	B204	qd, 3/4" female x female garden hose	1
7	B205B	QD, 1/2" npt x 3/4" mgh, pump-out	1
8	B272	adapter, 1/2" fpt x 3/8 mpt	1
9	PH634-33	sol hose, 1/4", silicone braided, clear	1
10	B170	ferrule, 1/4" brass	4
11	B109	adapter, brass, 1/4" barb x 1/4" mpt	3
12	H484	plate, mounting, QD	1
13	H230	screw, 10-32 x 1/2" phil pan head, s/s	34
14	B656B	valve, ball, 1/4" fpt x 1/4" fpt, s/s	2
15	H225	valve, drain, 1-1/2"	2
16	AH184	hose, pulse, 3/8" x 14.5", (OAL), f	2
17	B127	plug, brass, 1/4"mpt, hex	1
18	PH634-24	sol hose, 1/4", silicone braided, clear	1
19	B652	elbow, brass, 90 deg, 3/8"mpt x 1/4"mpt	2
20	C359C	regulator, 1000 psi, white spring	1
21	B103	elbow, brass, 90 deg, 1/4"mpt x 1/4" fpt	4
22	H876	washer, 1/2" flat, s/s	2
23	B111	adapter, brass, extender, 1/4" mpt x 1/4" fpt, hex	7
24	B102	qd, brass, 1/4" f x 1/4" fpt	1
25	B142A	coupling, brass, 1/4" fpt x 1/4" fpt	1
26	PH634-48	sol hose, 1/4", silicone braided, clear	1
27	B110	adapter, brass, 1/4" sw barb x 1/4" fpt, w/gasket	1
28	B259	qd, brass, 1/4" fqd x mpt	1
29	B260A	qd, brass, 1/4" mqd x fpt	3
30	B107	nipple, brass, 1/4"m, hex	1
31	B136	elbow, brass, 90 deg, 1/4" mpt x 1/4" mpt	4
32	B135	tee, brass, 1/4" mpt	1
33	H203	bolt, 1/4-20 x 1-1/4" hex head, s/s	2
34	H213	washer, 1/4" lock, s/s	7
35	H210	washer, 1/4" flat, s/s	5
36	H211	washer, 1/4" id x 1" od, flat, s/s	2
37	H196	support, pump, truckmount	1
38	H201	bolt, 1/4-20 x 1/2" hex head, zinc	2
39	H273	nut, kep, #10-32 zinc	7
40	E360	flanged male inlet recaptacle, 230V, 20A	2
41	H308D	gauge, pressure, 2000 PSI	1
42	B130	45 deg, street elbow, brass, 1/4" male NPTF	1
43	E512B	light, indicator, 125v (amber)	1
44	E515	switch, rocker, 2 position	4
45	H012	instrument panel, truck mount	1
46	H009	side panel, truckmount	1
47	B259A	qd, brass, 1/4" fqd x fpt	2
48	B105	bushing, brass, 3/8"mpt x 1/4"	3
49	B644	adapter, brass, 1/2" barb x 1/4" mpt	2
50	C313A	pump, CAT, 50-500 PSI, 120/240v	1
51	AH203	hose, pulse, 3/8" x 34", (OAL)	2
52	B119	filter, strainer, 1/4"	1
53	B173	ferrule, 1/2", brass	2
54	PH615-18	sol hose, 1/2", silicone braided clear	1
55	H768	bolt, 1/4-20 x 3/4" serrated hex flange, zinc	3
56	H471	standoff, motor, 6"	3
57	C348	vac motor, lx, hybrid, w/inlet tube, 173 cfm, 120v	1
58	H217	clamp, hose, 2-1/4 dia	6
59	PH628-11	vac hose, 2", black, wire reinforced	1
60	PH628-17	vac hose, 2", black, wire reinforced	1
61	E564	controller, circuit light	1
62	H001	side panel, small, truckmount	1

ITEM NO.	PART NO.	DESCRIPTION	QTY.
63	H011	back panel, truckmount	1
64	H124	Cuff-Lynx, 2" mpt x 2" female cuff	2
65	H304	screw, #8 x 5/8 phil oval, s/s	15
66	G090	lid, vac tank, clear, 7"	2
67	G091	gasket, 7", vac lid	2
68	P508	deflector, LX \ ETM	1
69	C347	vac motor, lx, hybrid, 173 cfm, 120v	1
70	H096	bolt, hex, 1/4-20 x 4", zinc Finish	3
71	A926	elbow, inlet assembly 2"	1
72	H073	coupler, 2.5" dia x 9.5", ss	1
73	H132	Cuff-Lynx, 2.5" m cuff x 2.5" mpt	1
74	H207	cam & grove fitting 1-1/2", male	1
75	P506	ETM Vac Tank	1
76	H265	float, ball style, ETM	1
77	C388B	switch, mechanical float, for pumpout	1
78	C384	pump out, 35 gpm, 115v, stainless	1
79	H396	barb, 1-1/2" x 1-1/2" fpt, pump out	1
80	H300	cuff, hose, 1-1/2 x 1-1/2, wire	1
81	PH627-20	vac hose, 1-1/2", black, wire reinforced	1
82	P686	swing check valve, pump out	1
83	H185	screw, 10-32 x 1 1/4", phil flat full thread	1
84	H059	bracket, ETM, pump-out	1
85	H062	vac mounting plate, ETM	1
86	H010	top panel, truckmount	1
87	H202	bolt, 1/4-20 x 3/4" hex head, s/s	7
88	H216	nut, lock, 1/4-20, nylon insert, s/s	14
89	H174	bolt, 1/2-13 x 3/4, c/s, hex head	8
90	H173	washer, lock, 1/2 med split, steel zinc	8
91	H254	washer, axle, cut 1/2" id	8
92	H057	chassis, ETM cart	1
93	H668	caster, 4", black hub & gray tread	2
94	H204	bolt, 1/4-20 x 1-3/4" hex head, s/s	10
95	H109	wheel, 10", foam filled	2
96	H058	axle, ETM cart	1
97	B143	street elbow, 90 degrees, 1/8"	1
98	B194	nipple, hex, 1/4" mpt x 1/8" mpt	1

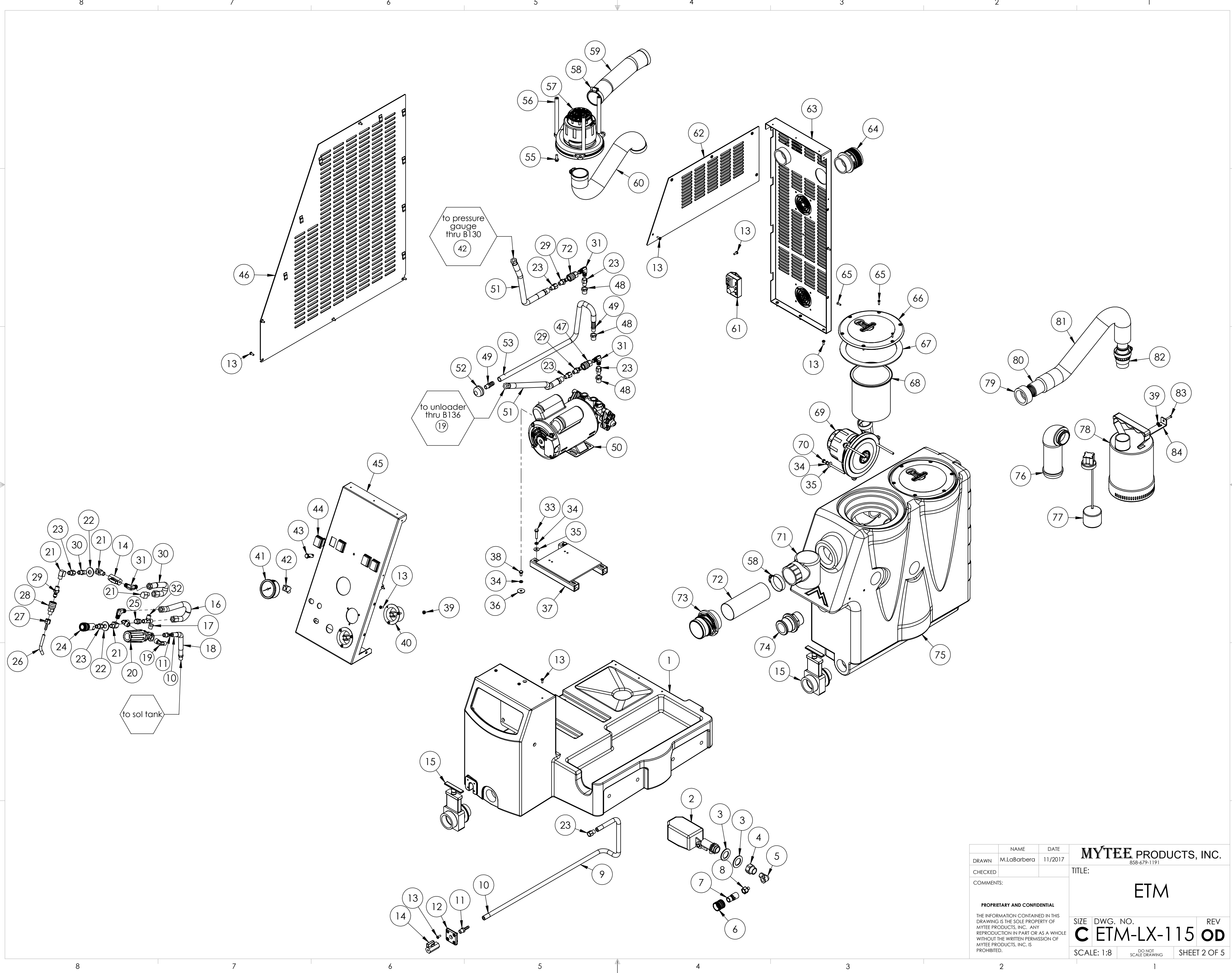
ITEMS NOT SHOWN		
PART NO.	DESCRIPTION	QTY.
A959	harness, electrical	1
E351	power cord, ext, 50', 12/3, twist lock	2
H106	Cuff-Lynx, 2" hose x 2.5" female	1
H107	Cuff-Lynx 2.5" hose x 2.5" f swivel	1
H294	vac hose, 1-1/2" x 25' SW	1
H205	cam & groove fitting 1-1/2", female w/ lock	1
5003	electrical adaptor ETM - 3 prong	1
5004	electrical adaptor ETM - 4 prong	1
ADM-ETM	ETM manual	1



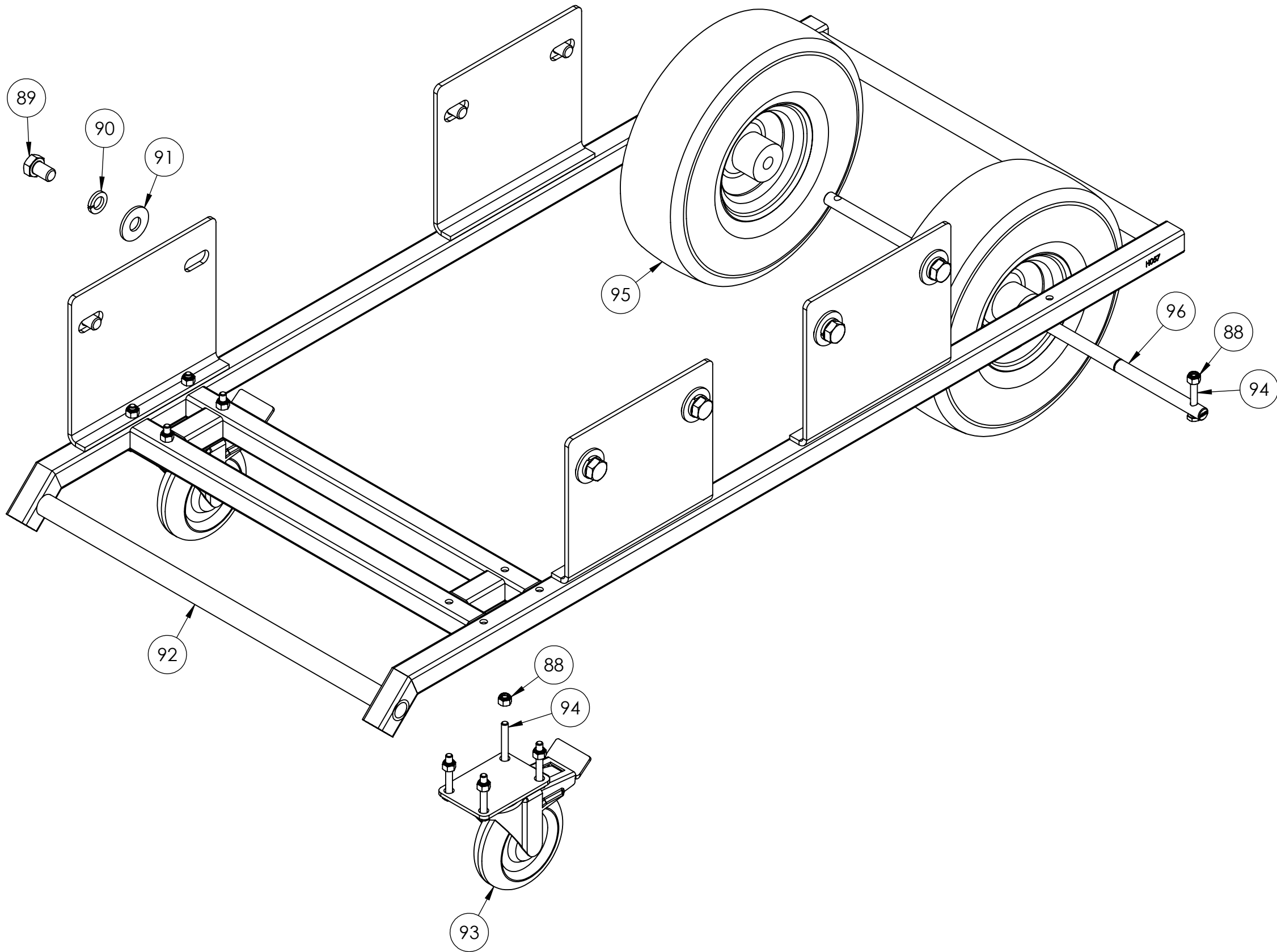
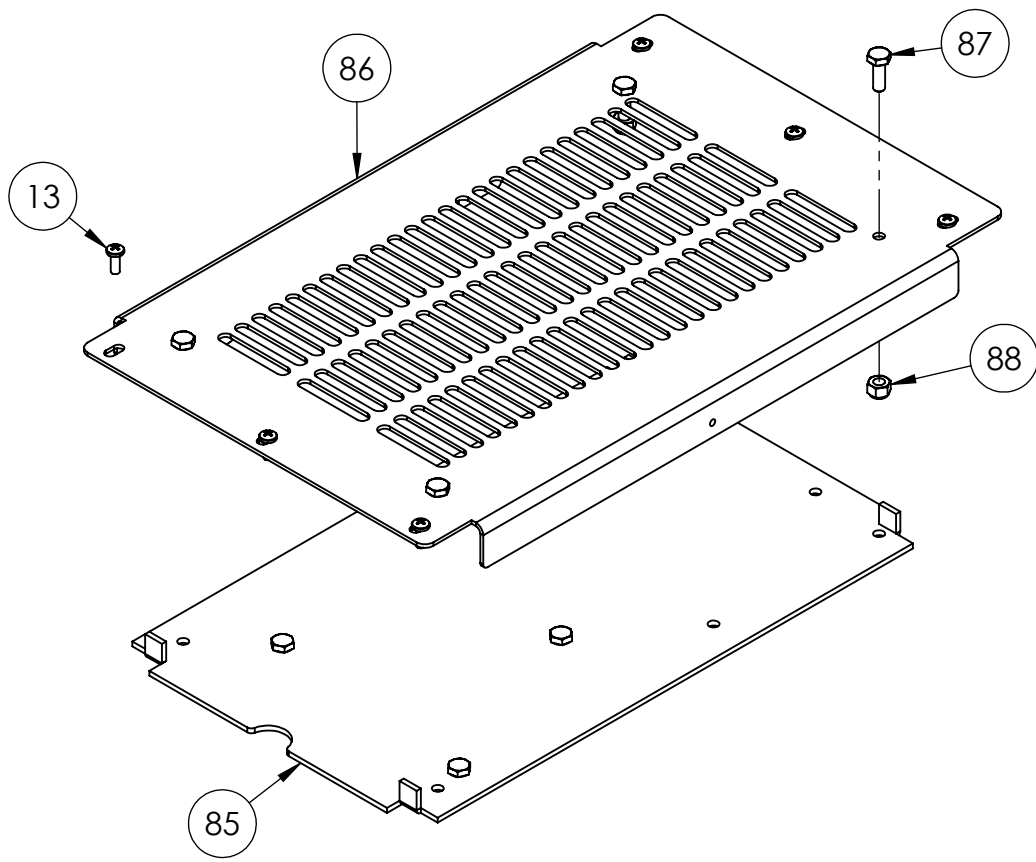
	NAME	DATE			
DRAWN	M.LaBarbera	11/2017	858-679-1191		
CHECKED			TITLE:		
COMMENTS:					
PROPRIETARY AND CONFIDENTIAL					
THE INFORMATION CONTAINED IN THIS DRAWING IS THE SOLE PROPERTY OF MYTEE PRODUCTS, INC. ANY REPRODUCTION IN PART OR AS A WHOLE WITHOUT THE WRITTEN PERMISSION OF MYTEE PRODUCTS, INC. IS PROHIBITED.			SIZE	DWG. NO.	REV
			C	ETM-LX-115	OD
			SCALE: 1:8	DO NOT SCALE DRAWING	SHEET 1 OF 5

F
E
D
C
B
A

F
E
D
C
B
A



	NAME	DATE	MYTEE PRODUCTS, INC.	
DRAWN	M.LaBarbera	11/2017	858-679-1191	
CHECKED			TITLE:	
COMMENTS:			ETM	
PROPRIETARY AND CONFIDENTIAL			SIZE	DWG. NO.
THE INFORMATION CONTAINED IN THIS DRAWING IS THE SOLE PROPERTY OF MYTEE PRODUCTS, INC. ANY REPRODUCTION IN PART OR AS A WHOLE WITHOUT THE WRITTEN PERMISSION OF MYTEE PRODUCTS, INC. IS PROHIBITED.			C	ETM-LX-115
			SCALE: 1:8	REV
			DO NOT SCALE DRAWING	OD
			SHEET 2 OF 5	

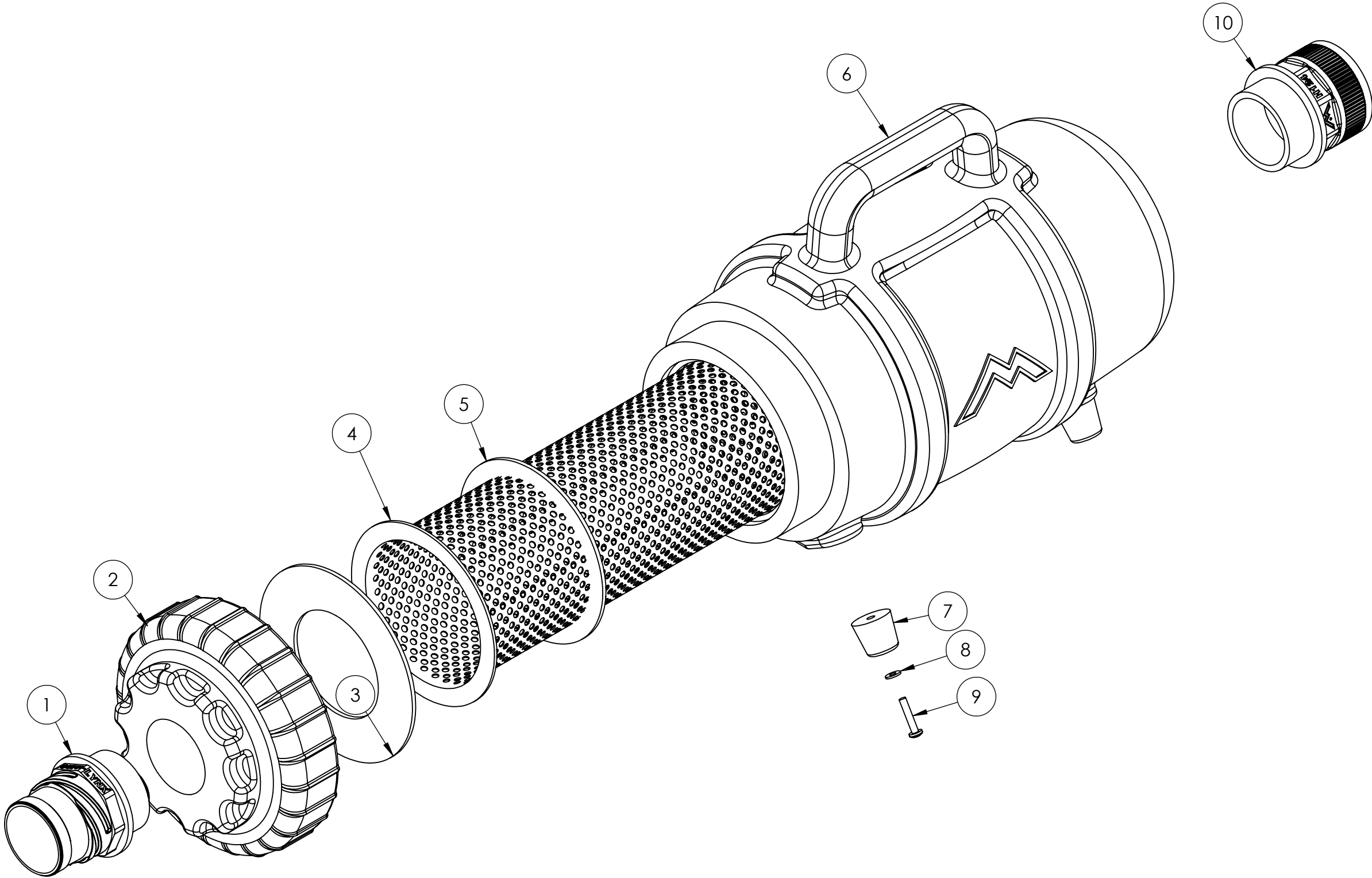
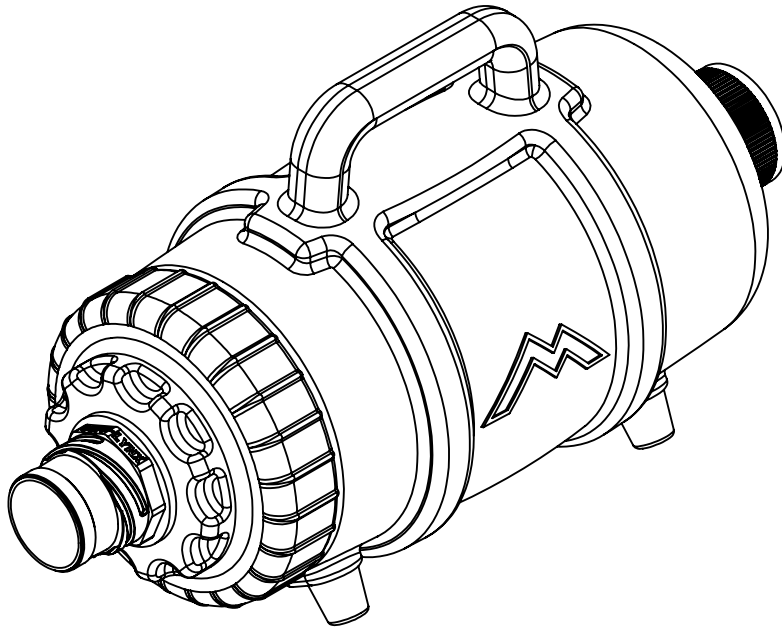


	NAME	DATE	MYTEE PRODUCTS, INC. 858-679-1191	
DRAWN	M.LaBarbera	11/2017		
CHECKED			TITLE: ETM	
COMMENTS: PROPRIETARY AND CONFIDENTIAL THE INFORMATION CONTAINED IN THIS DRAWING IS THE SOLE PROPERTY OF MYTEE PRODUCTS, INC. ANY REPRODUCTION IN PART OR AS A WHOLE WITHOUT THE WRITTEN PERMISSION OF MYTEE PRODUCTS, INC. IS PROHIBITED.				
SIZE		DWG. NO.	REV	
C		ETM-LX-115	OD	
SCALE: 1:8		DO NOT SCALE DRAWING	SHEET 3 OF 5	

ITEM NO.	PART NO.	DESCRIPTION	QTY.
1	H135	Cuff-Lynx, 2" m cuff x 2" mpt	1
2	P561	cap, 6", threaded, w/ 2" npt	1
3	G031	gasket, 3.25" i.d. x 5.88" o.d.	1
4	H359	basket, strainer, 4.5 DIA x 12.5	1
5	G084	gasket, 4.55" x 5.5"	1
6	P563A	body, lint hog, new style	1
7	G211	rubber feet, 1-1/8" bas diag, 1" height	4
8	H612	washer, 8 flat, s/s	4
9	H231	screw, 10-32 x 1" phil pan head, s/s	4
10	H124	Cuff-Lynx, 2" mpt x 2" female cuff	1

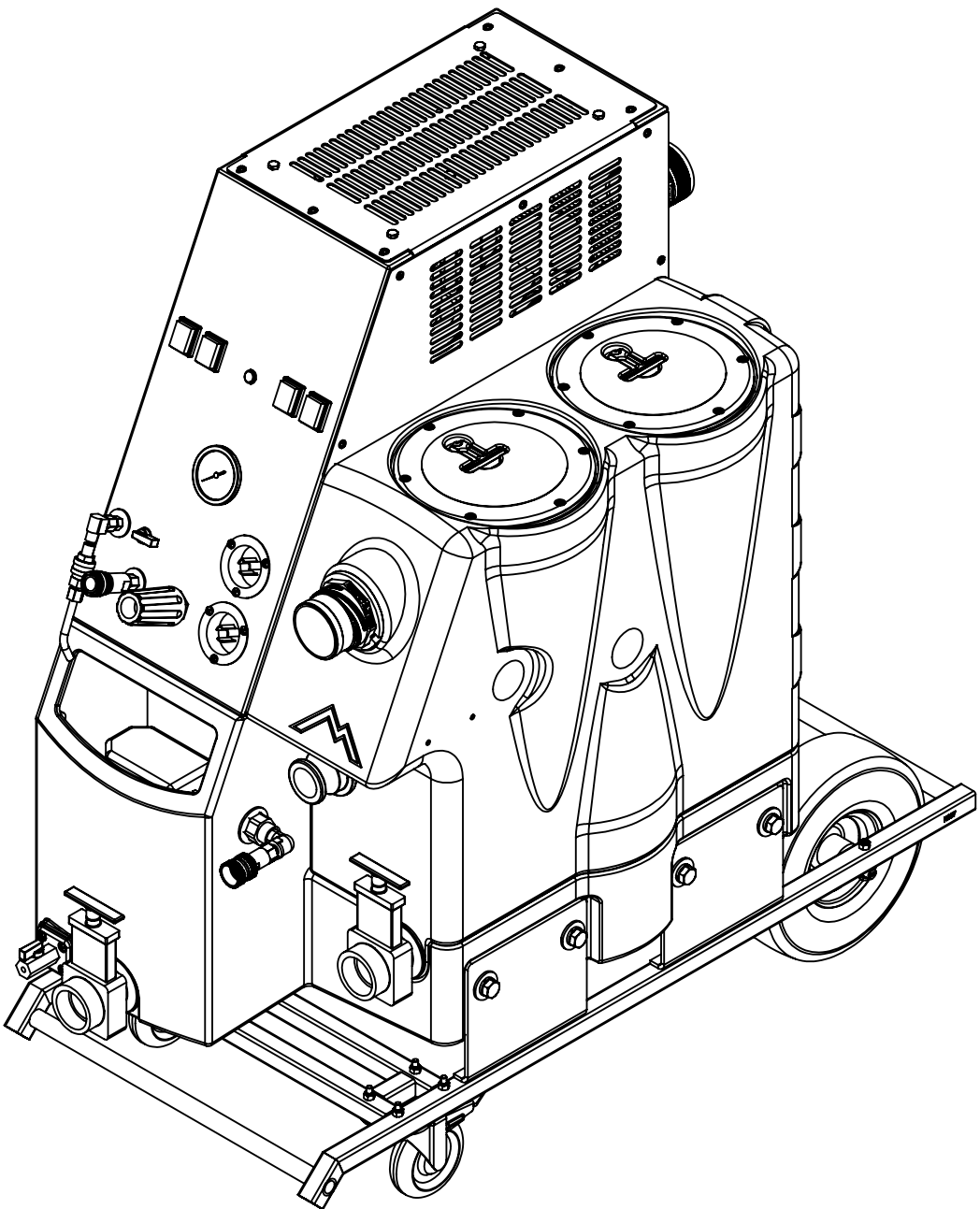
ACCESSORIES NOT SHOWN

PART NO.	DESCRIPTION	QTY.
ADM-F200	manual, lint hog, QR codes	1
G008	SEE PAK NUMBER black piglet filters - bag of 25	1
H110	Cuff-Lynx, 2" hose x 2" f swivel	1
H136	Cuff-Lynx, 2" hose x 2" male swivel	1
H141	Cuff-Lynx, 2" hose to 1.5" reducer	1



	NAME	DATE	MYTEE PRODUCTS, INC. 858-679-1191		
DRAWN	M. LaBarbera	5/25/11			
CHECKED			TITLE:		
PROPRIETARY AND CONFIDENTIAL THE INFORMATION CONTAINED IN THIS DRAWING IS THE SOLE PROPERTY OF MYTEE PRODUCTS, INC. ANY REPRODUCTION IN PART OR AS A WHOLE WITHOUT THE WRITTEN PERMISSION OF MYTEE PRODUCTS, INC. IS PROHIBITED.			SIZE	DWG. NO.	REV
			C	ETM-LX-115	OD
			SCALE: 1:3	DO NOT SCALE DRAWING	SHEET 4 OF 5

REVISIONS			
REV.	DESCRIPTION	DATE	APPROVED
OD	ORIGINAL DRAFT	-	JFL



	NAME	DATE	MYTEE PRODUCTS, INC. 858-679-1191	
DRAWN	M.LaBarbera	11/2017		
CHECKED			TITLE:	
COMMENTS:			ETM	
PROPRIETARY AND CONFIDENTIAL THE INFORMATION CONTAINED IN THIS DRAWING IS THE SOLE PROPERTY OF MYTEE PRODUCTS, INC. ANY REPRODUCTION IN PART OR AS A WHOLE WITHOUT THE WRITTEN PERMISSION OF MYTEE PRODUCTS, INC. IS PROHIBITED.			SIZE	REV
			DWG. NO. C ETM-LX-115	OD
			SCALE: 1:8	DO NOT SCALE DRAWING
			SHEET 5 OF 5	