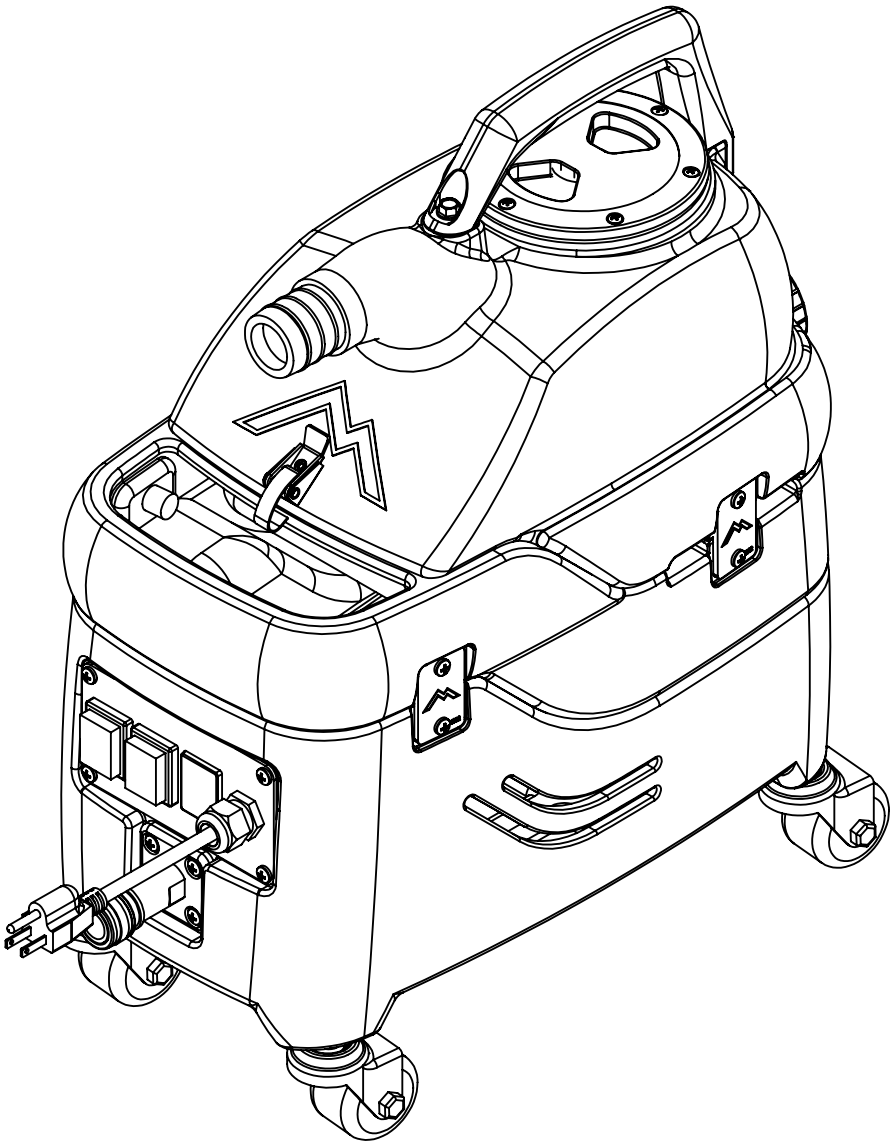


ITEM NO.	PART NO.	DESCRIPTION	QTY.
1	H246	screw, 8-32 x 3/8" SHCS, alloy, Black	2
2	H451	latch, S-300H	1
3	H770	bolt, 1/4-20 x 1/2" serrated hex flange, zinc	2
4	H611	handle, S-300H, black	1
5	H304	screw, 8 x 5/8", phil oval, s/s	6
6	G030	lid, vac tank, 3.5", clear	1
7	G058	vac tank deflector	1
8	G217	filter, foam, 1.33" x .50"	1
9	G216	filter, screen mesh, 1.33" x 8 mesh	1
10	P639	adapter, pvc, 1" fslip x 3/4" mpt	1
11	H097	washer, 1" ID x 1.5" OD x .075", flat, s/s	3
12	P640	adapter, pvc, 3/4" fslip x 3/4" fpt	1
13	P610	vac tank, S-300H	1
14	G036	cap, 2.5" threaded, tethered	1
15	G004	gasket, vacuum motor	2
16	C316A	vac motor, 2 stage, 230V, peripheral	1
17	H404	nut, hex, 3/8" - 16	4
18	H384	washer, 3/8 flat, s/s	4
19	H637	caster, swivel, stem, 2", w/out lock	4
20	H273	nut, kep, #10-32 zinc	10
21	H484	plate, mounting, QD	1
22	H230	screw, 10-32 x 1/2" phil pan head, s/s	20
23	H221	nut, lock, 1/2" steel, electrical	1
24	P967A	plug, switch	1
25	H220	fitting, strain relief, cord	1
26	E533	power cord, end, 25', 16/3	1
27	E515	switch, rocker, 2 position	2
28	H310	plate, switch, MyteeLite, 3 hole	1
29	B102	qd, brass, 1/4" f x 1/4" fpt	1
30	B166	fitting, brass, 1/4"mpt x 1/4" push-in	1
31	P612	base, S-300H	1
32	PH657-6	tubing, 1/4", nylon, blk	1
33	B140	connector, 1/4" push-in x 1/8" mpt	1
34	C309	pump, 55psi, solenoid, 230V, 50hz	1
35	H250	bracket, set 55 psi pump	2
36	B110	adapter, brass, 1/4" sw barb x 1/4" fpt, w/gasket	2
37	H212	flat washer, 9/16"ID x 1 1/16"OD, AN960-C916	2
38	B107	nipple, brass, 1/4"m, hex	1
39	B119	filter, strainer, 1/4"	1
40	PH634-8	sol hose, 1/4" silicone braided, clear	1
41	B170	ferrule, 1/4" brass	2
42	B194	nipple, hex, 1/4" mpt x 1/8" mpt	1
43	B103	elbow, brass, 90 deg, 1/4"mpt x 1/4" fpt	1
44	P611	sol tank, S-300H	1
45	H312	plate, connecting, MyteeLite	5

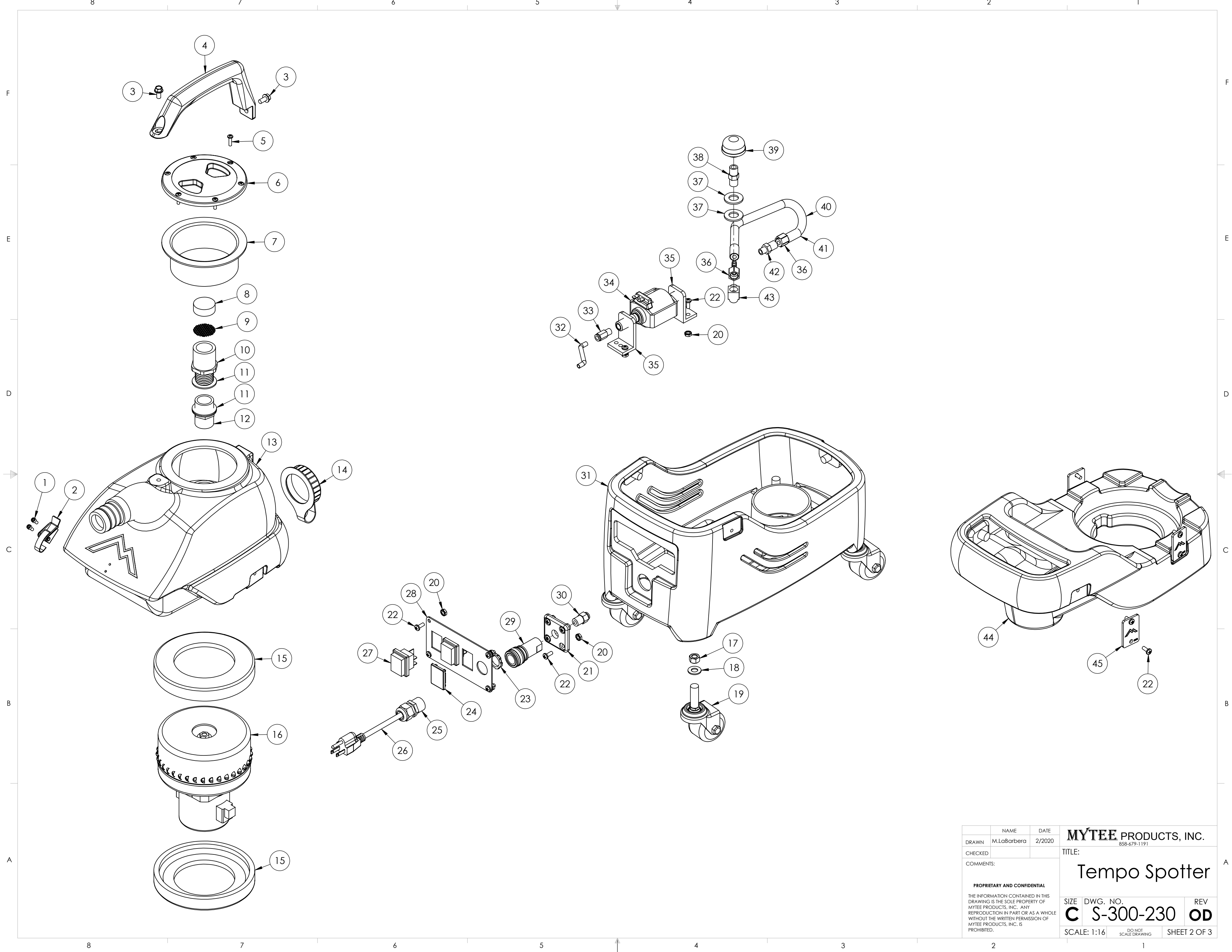
ITEMS NOT SHOWN

PART NO.	DESCRIPTION	QTY.
E395	harness, electrical, S-300	1

REVISIONS			
REV.	DESCRIPTION	DATE	APPROVED
OD	ORIGINAL DRAFT	2/2020	JFL

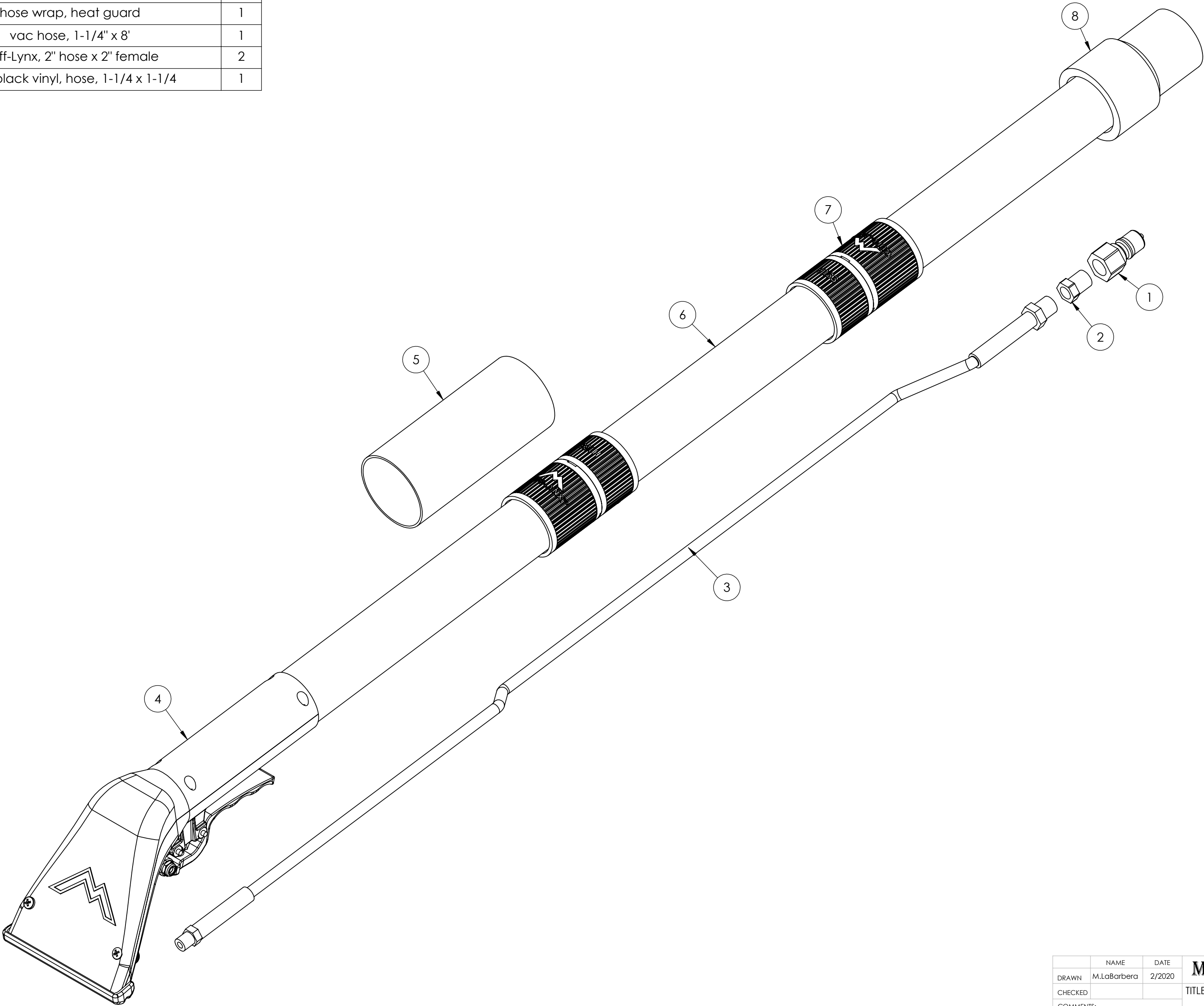


	NAME	DATE	MYTEE PRODUCTS, INC. 858-679-1191	
DRAWN	M.LaBarbera	2/2020		
CHECKED			TITLE:	
COMMENTS:			Tempo Spotter	
PROPRIETARY AND CONFIDENTIAL THE INFORMATION CONTAINED IN THIS DRAWING IS THE SOLE PROPERTY OF MYTEE PRODUCTS, INC. ANY REPRODUCTION IN PART OR AS A WHOLE WITHOUT THE WRITTEN PERMISSION OF MYTEE PRODUCTS, INC. IS PROHIBITED.			SIZE	REV
			DWG. NO. C S-300-230	OD
			SCALE: 1:16	SHEET 1 OF 3



	NAME	DATE	MYTEE PRODUCTS, INC. 858-679-1191	
DRAWN	M.LaBarbera	2/2020		
CHECKED			TITLE:	
COMMENTS:			Tempo Spotter	
PROPRIETARY AND CONFIDENTIAL THE INFORMATION CONTAINED IN THIS DRAWING IS THE SOLE PROPERTY OF MYTEE PRODUCTS, INC. ANY REPRODUCTION IN PART OR AS A WHOLE WITHOUT THE WRITTEN PERMISSION OF MYTEE PRODUCTS, INC. IS PROHIBITED.			SIZE	DWG. NO.
			C	S-300-230
			SCALE: 1:16	REV
			DO NOT SCALE DRAWING	OD
			SHEET 2 OF 3	

ITEM NO.	PART NO.	DESCRIPTION	QTY.
1	B101	qd, brass, 1/4" m	1
2	B104	bushing, brass, 1/4" mpt x 1/8" f	1
3	AH135	sol hose, 1/9" x 97", (OAL), m	1
4	8400P	Air Lite	1
5	G079	hose wrap, heat guard	1
6	H360	vac hose, 1-1/4" x 8'	1
7	H133-2	Cuff-Lynx, 2" hose x 2" female	2
8	H943	cuff, black vinyl, hose, 1-1/4 x 1-1/4	1



	NAME	DATE	MYTEE PRODUCTS, INC. 858-679-1191	
DRAWN	M.LaBarbera	2/2020		
CHECKED			TITLE:	
COMMENTS: PROPRIETARY AND CONFIDENTIAL <small>THE INFORMATION CONTAINED IN THIS DRAWING IS THE SOLE PROPERTY OF MYTEE PRODUCTS, INC. ANY REPRODUCTION IN PART OR AS A WHOLE WITHOUT THE WRITTEN PERMISSION OF MYTEE PRODUCTS, INC. IS PROHIBITED.</small>			Tempo Spotter	
			SIZE	DWG. NO.
			C	S-300-230
			SCALE: 1:16	DO NOT SCALE DRAWING
			SHEET 3 OF 3	